

Manual

EXMAX

LTF / EN




SOL[®]
PARAGLIDERS

Version 2 8 / 2023

Summary

WELCOME TO THE SOL TEAM	4
Symbols.....	4
IMPORTANT NOTES.....	5
CX MAX - THE PROJECT.....	6
Recommendation	6
Certification	6
Special characteristics.....	6
Accessories	6
HARNESSE.....	8
Technical Resources	8
Comfort.....	10
Safety	12
Aerodynamics	13
Technology.....	14
ADJUSTMENTS AND INSTALLATIONS.....	16
Carabiners installation	16
Back protector installatiom.....	17
Accelerator installation	18
Rescue parachute installation.....	18
Rescue parachute compartment	22
Side adjustaments.....	23
Shoulder adjustament	23
Adjustment ventral	24
Legs adjuntments.....	25
Safety system	26
Leg cover adjustment	27
Leg cover closing.....	28
Container for instruments	28
Hydration Compartment.....	29
Pockets.....	30
Rescue parachute compartment	30
Compartimento de lastro.....	31
Adjustment for flight.....	33
THE HARNESSE - INFORMATION.....	35
Tow release take off.....	35
Tandem flight	35
Compatibilidade.....	35

Take Off Check List	36
EXTREME FLIGHT SITUATIONS.....	36
Water landing	36
STORING YOUR HARNESSE	36
Storage.....	36
Back Pack	37
TIPS FOR CARE.....	38
INSPECTION	39
REPAIRS.....	39
WARRANTY	40
OPERATION LIMITS	42
ENVIRONMENT AND RECYCLING	42
FINAL WORDS.....	43
TECHNICAL DATA.....	44
Weight, measure and data.....	44
Reference table: Height X Weight.....	46
Parts and materials	48



WELCOME TO THE SOL TEAM

You have just acquired a high-quality product, manufactured under one of the most demanding industry standards worldwide. We are certain that this equipment will allow you to learn, increase and amplify your knowledge and technique during your flights.

We hope your harnesses CX MAX will provide you with many nice flights and that you're experiencing moments that will last forever in your memory. This way our philosophy will prove right: security, performance, easy handling and innovation.

Please, read this manual carefully. All necessary information you'll need for your new equipment is right here.

In case of questions or doubts regarding your paraglider or in case you simply are interested in our new products - we are at your disposal.

Thank you very much for choosing SOL PARAGLIDERS.

Symbols



Warnings and important notes - pay attention and read carefully



Additional information



Notes regarding environment protection

IMPORTANT NOTES

- As owner of a Sol Paraglider you are responsible for all possible risks existing by using this equipment. The inappropriate and/or abusive use of your equipment increases these risks.
- It's not possible to transfer this responsibility of risks, using this equipment, to the producer, distributor or seller.
- A regular training, whenever possible, especially on the ground, is indispensable and necessary. A poor handling and control of the glider, especially on the ground, is one of the most frequent causes of accidents.
- Always be prepared to improve your skills. Attending special workshops will improve your skills and maintain your knowledge about materials and techniques, which always are developing, up to date.
- Only use a certified paraglider, use them within the described and certified limits. Remember, if you fly a paraglider outside the certified norms your insurance will not pay the damage. It is in your responsibility as a pilot to know what your insurance covers.
- We recommend that every new or reviewed harnesses will be tested on the ground and flew from the training hill by his pilot.
- Never take off without helmet, hand-gloves and boots.
- Check all your equipment before each flight. Never take off with an inappropriate or damaged equipment.
- As pilot you only are allowed to use a paraglider in accordance to your skills and in accordance to the instruction level required in each country.
- Before each flight check your physical and mental state. Are you fit to fly?
- Before take off choose the right harnesses and environment, check the weather conditions, if you have any doubt - don't fly.
- Never fly during rain, snow, strong wind, turbulent conditions or if thunderstorm clouds are in the sky.
- If you are always flying with conscious - you'll be able to fly for many years your glider.

CX MAX - THE PROJECT

A CX Max é uma selete carenada completamente desenvolvida para competições, grandes voos e recordes mundiais. A família de seletes SOL CX é reconhecida por ter colecionado muitos títulos e todos os mais importantes recordes mundiais desde 2002.

Apresenta melhor aerodinâmica para ajudar no ganho de desempenho dos parapentes. Seu formato ergonômico e sua geometria estão baseados nos novos projetos de parapente onde a selete é elemento fundamental para a pilotagem e desempenho.

Recommendation

The CX MAX harness is a faired harness designed for racing, cross country and pilots who already have an experience in thermal flight.

Certification

The CX MAX has a LTF / EN certification. The certification details are available on: www.solparagliders.com.br.

Special characteristics

Comfort - Security - Modern design - Easy handling - Long life - Aerodynamics

Accessories

Along with your harnesses you receive:



REF - 4423



REF - 22584



REF - 22385



REF - 4424



REF - 4425



REF - 4361



REF - 21046



REF - 4420



REF - 4421



REF - 22153



REF - 4169



REF - AC191



HARNESS

Technical Resources

1. Spacious storage compartment;
2. ID compartment;
3. Water compartment (hydration system);
4. Passage for hydration hose exit and for Radio PTT;
5. Front instrument container with 10L ballst compartment;
6. Speedbag closure by pulley system;
7. Composite Divinycell® lightweight seat plate;

8. Cable guide for accelerator;
9. Easy speedbag entry and exit;
10. Composite Divinycell® lightweight footboard;
11. 2 side pockets;
12. Speed system with 39mm ball bearing pulleys;
13. Dois pontos de conexão para roldanas medias ou grandes;
14. Compartimento para lastro de 8 litros com saída de mangueira lateral.



Comfort

1. Shoulder pads adjustable;
2. Regulagem lateral para a inclinação de encosto;
3. Lumbar adjustments;
4. Chest strap adjustment;
5. Anatomic back shape;
6. Leg strap adjustment in V;
7. Adjustable carabiner distance 35-55cm;



8. Inclination and length adjustment of the speedbag;
9. Anti-forget closure system in T;
10. Lateral plates for weight distribution;
11. Anatomic shoulder shape;
12. Independent and adjustable ABS;
13. Seat plate inclination adjustment;
14. Front closure system in V (28 mm);



Safety

1. Compartimento de reserva lado direito;
2. Protetor de coluna homologado 14 cm;
3. Compartimento de ANTI-G;
4. Sistema de bridles independentes do reserva conforme norma EN / LTF;
5. Compartimento de reserva lado esquerdo;
6. Fecho T de segurança;
7. Chapa de proteção de impacto e perfuração.



Aerodynamics

1. Cone aerodinamico;
2. Bico da carenagem perfilado;
3. Carenagem e container acoplados juntos.





Increased stability of the harness without losing the possibility of piloting with the use of body weight.



Care with weight distribution throughout the set and various adjustments for the best comfort.



For those pilots who wish to fly with two rescue systems.



Cutting edge technology laser equipments prepare all molds and parts of the canopy.



Coeficiente aerodinamico.



Easier to connect and disconnect from the harness.



Essential anti-forgetting feature for connecting leg.



Protectors designed and tested for real additional passive safety.



Is the hybrid utilization of various types of fabrics and lines. An optimised combination of durability and resistance with low deformation and less weight.

ADJUSTMENTS AND INSTALLATIONS

The CX MAX Harness provide a variety of adjustment possibilities, so that the pilot is able to find his/her ideal flying position. The first adjustment must be done in a simulator where you can be hanging in order to make the adjustments

It may be necessary to take a few testing flights until the ideal setting is achieved, but the pilot will be rewarded with amazing comfortable flights.

For your first flight, choose calm weather conditions. Should you need to make further adjustments, it will be easier to find the ideal position after this first flight.



Install the back protector and the reserve/s before you make the adjustments of the SOL-Harness.

Never carry instruments that may perforate the harness backing in case of impact.

Carabiners installation

Step 1.



Step 2.



Pay attention at each installed carabiner of the permission and/or other references of the producer. You have to look out regularly for thin fissures and/or mal-function. The carabiner has to close always 100%.



If you choose to change the carabiners (even made of steel) at least each 5 years or after 250 flight hours you are making a wise decision.



Sabemos que a escolha dos mosquetões é uma opção do cliente busque utilizar produtos compatíveis SOL.

Back protector installation

It's mandatory to use the proper SOL CX MAX back protector with this harness. Any other protector use will result in certification loss.

It's very important to fix the protector against movements.

After a hard landing on the protector, the harness and the protector has to be examined for damage.

A damaged protector could not further be used, cause probably he doesn't match any more the test results. The certification expired. A change is necessary – it's also in your interest an safety. Please let all parts of the harness be examined. The activator for the reserve has to function 100%, also the mechanism of the carabiners.

If necessary, you should ask for professional help to make sure it is properly function

Step 1.



Step 2.



Step 3.



Step 4.



Accelerator installation

If necessary buckles to adjust the speed system are found on the harness' body. Follow the instruction in the image. First you have to thread the line through the metal grommets in front of the seat.



Step 1.



Step 2.



Step 3.



Rescue parachute installation

See more
[CX MAX Instalação do paraquedas](#)

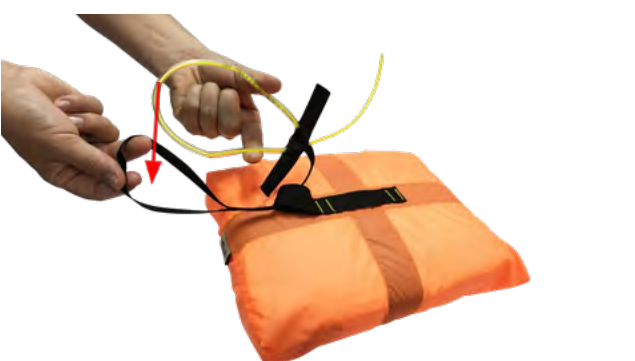
Rescue parachute compartment volume

Principal parachute - Right: 4000 / 9000 cm³
Principal parachute - Left: 2500 / 4500 cm³

Step 1.



Step 2.



Step 3.



Step 4.



Step 5.



Step 6.



Step 7.



Step 8.



Step 9.



Step 11.



Step 13.



Step 15.



Step 10.



Step 12.



Step 14.



Step 16.



Step 17.



Step 19.



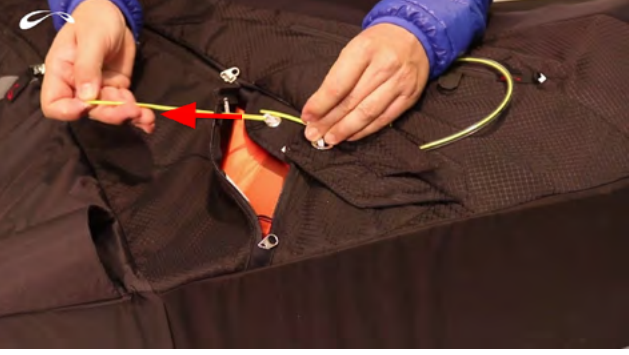
Step 21.



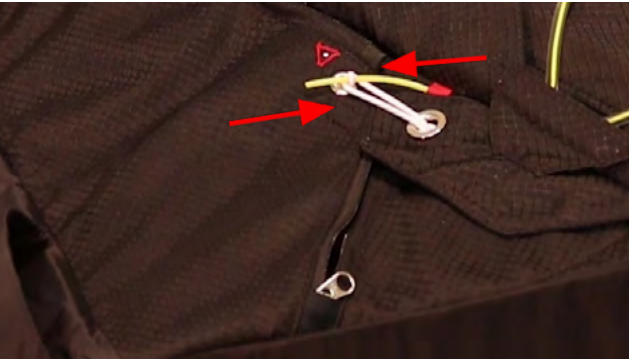
Step 23.



Step 18.



Step 20.



Step 22.



Step 24.



All necessary buckles to adjust the speed system are found on the harness' body. Follow the instruction in the image. First you have to thread the line through the metal grommets in front of the seat.

Before every flight, inspect the activation handle and its pins, to make sure they are at the correct setting position.



After the installation you should make a test

The size of the container takes into account the size of the reserve, large reserves may not be suitable for this space.

Pay special attention to the fact in which direction you must pull your rescue parachute in order to throw it out.

Rescue parachute compartment

The reserves parachutes compartments on your harness were designed for most of the parachutes in the market. In any case, you must install, simulate and perform all testing, so that you will not have any surprises in case you need to activate it. Any questions concerning its operation must be dealt with during the installation and setting of the harness before the first flight.

If you need a strong force to remove the rescue parachute, check the installation again. All questions about operation should be discussed during installation and adjustments. If you have doubts, please ask a SOL dealer or an authorized flight school.

In case of a first combination between harness and reserve there has to be made a test of compability. This test has to me made from an authorized person or workshop!

Never sit down in your harness for tests or other activities when it is layed on the ground, this can damage the harness, the rescue container and the whole rescue system.



The reserve has to be packed and checked every year. This has to be done by an authorized workshop. Pay attention to the references in the owner's manual for your reserve. Each check is to be marked in the check protocol of the reserve.

After the first and each following installation has to be made a test to secure that the applicated force to pull the reserve lays between 2 and 5 daN.

Side adjustments

Make sure the setting is symmetric for your safety and comfort.

Adjustament 1.



Adjustament 2.



Adjustament 3.



Adjustament 4.



Shoulder adjustment

1. Shoulder adjustment: Make sure the shoulder adjustments setting are symmetric for your safety and comfor, For better comfort, the shoulder straps support part of the dorsal weight.

2. Shoulder adjustment: The adjustable chest strap is fixed on the shoulder strap. This is for your comfort and safety. They better be aligned with the shoulders. In the lock is integrated an emergency whistle.

Adjustament 1.



Adjustament 2.



Adjustment ventral

1. Adjustment ventral: The chest strap is responsible for the ventral opening, depending of the paragliders size. There is a measurement of the carabiners opening to which the paraglider was designed and tested.



With SOL paragliders you must fly within these measurements. In case you are outside these measurements, the paraglider’s behavior can not correspond to the certification.

PARAGLIDER SOL								
SIZE	XXS	XS	S	M	L	XL	XXL	TANDEM
MEASURE	38 CM	38 CM	40 CM	42 CM	44 CM	46 CM	48 CM	44 CM

We have included a tape with your harness to help you set the exact measurement of distance between the carabiners.



The measurement has to be made at the points indicated in the picture above.



The distance has to be within the limits to obey the characteristics of the certification.

Legs adjuntments

1. Legs adjuntments: Make sure the legs adjustments setting is symmetric for your safety and comfort.

Step 1.



Step 2.



Step 3.



Step 4.



Step 5.



Step 6



Check the correct closing buckles before the flight.

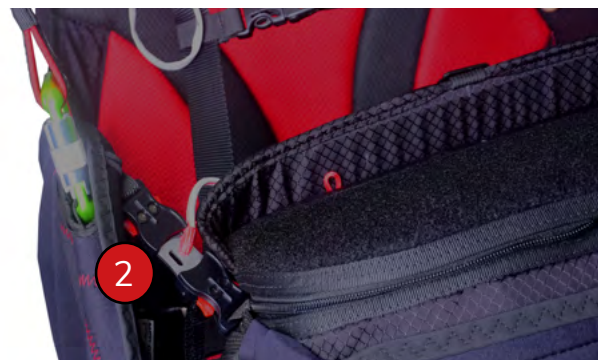
Safety system

1. Leg cover closing
2. Anti-forget safety system for leg and chest closing.

Adjustament 1.



Adjustament 2.

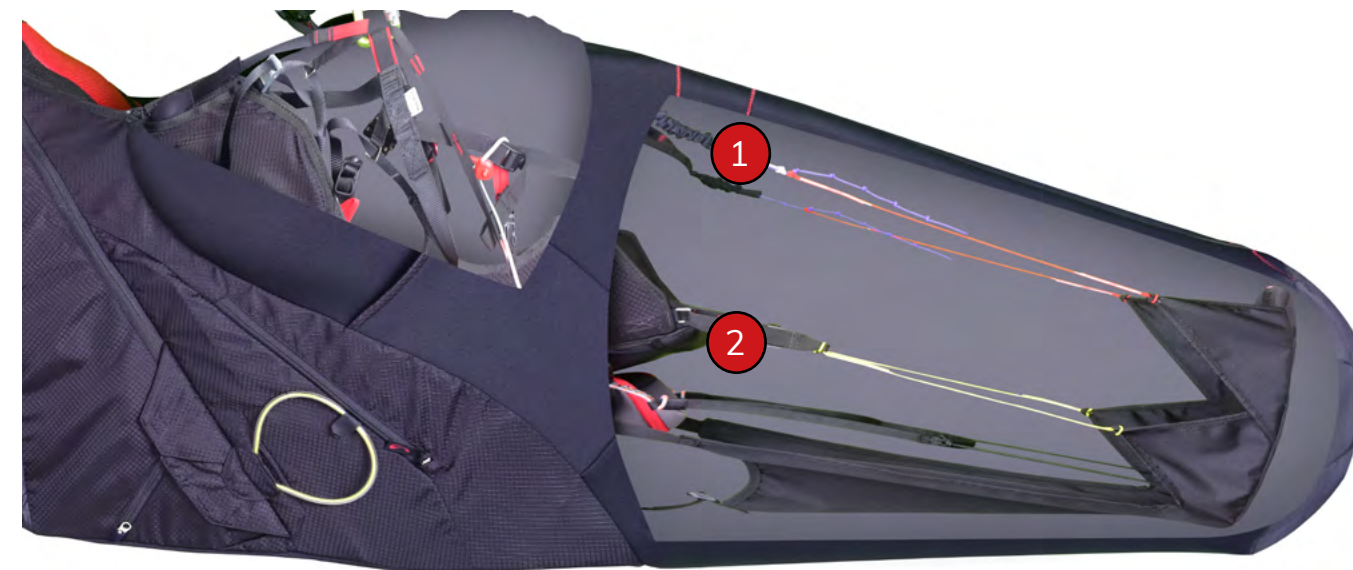


Leg cover adjustment

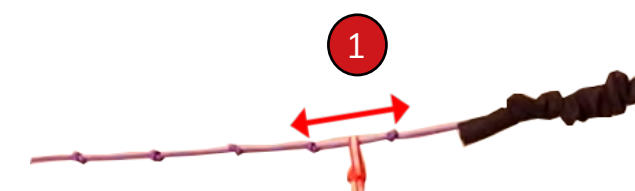
Your harness is composed by a leg cover and a main part which adjustment details must be carefully observed. They are the ones that make your flight position been aerodynamic and comfortable.

1. Adjustment: Composed by strips that can extend or short the leg cover (8 cm). Find the best position for your legs.

1. Adjustment: Composed by velcro which allows to extend or shorten the bellow part of the leg cover (10cm).



Adjustament 1.



Adjustament 1.



The adjustments must be always symmetric to avoid discomfort.



Its position gets altered when the reserve or baggage is placed. Put all these items at the moment you are making the adjustments in your harness.

Try to be always in a position that does not affect your paraglider performance.

Leg cover closing

Your leg cover is composed by 2 closing points

1. Closing the bottom part of leg cover
2. Closing the superior part of leg cover.

Adjustament 1.



Adjustament 2.



Container for instruments

The container has a detachable platform for the instruments with zipper fixation.



Hydration Compartment

Your harnesses has a camelback compartment located at the harness back. An opening allows the camelback hose exit next to the pilot, according as indicated.

Step 1.



Step 2.



Step 3.



Step 4.



Pockets

CX MAX harnesses feature several pockets. These pockets were designed in such way that they will keep its contents from falling accidentally during flight.

- 1. Pockets.
- 2. Side pockets.



- 1. Pockets.
- 2. Side pockets.



Rescue parachute compartment

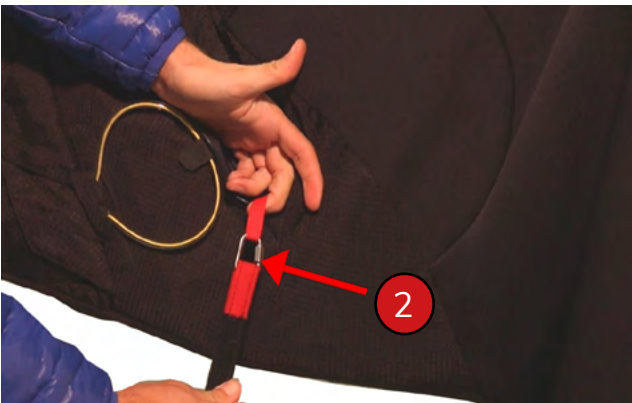
Leia o manual de utilização de seu paraquedas Anti-G



Passo 1.



Passo 2.



Passo 3.



Passo 4.



Compartimento de lastro

With a new concept, a CX MAX brings even more options for pilots. The current compartments comes with the possibility to use with a side hose outlet. So you can work better within the weight range of your paraglider.

- 1. Superior 10 liters.
- 2. Lower 8 liters.



Superior.

Step 1.



Step 2.



Step 3.



Step 4.



Lower.

Step 1.



Step 2.



Step 3.



Step 4.



Adjustment for flight

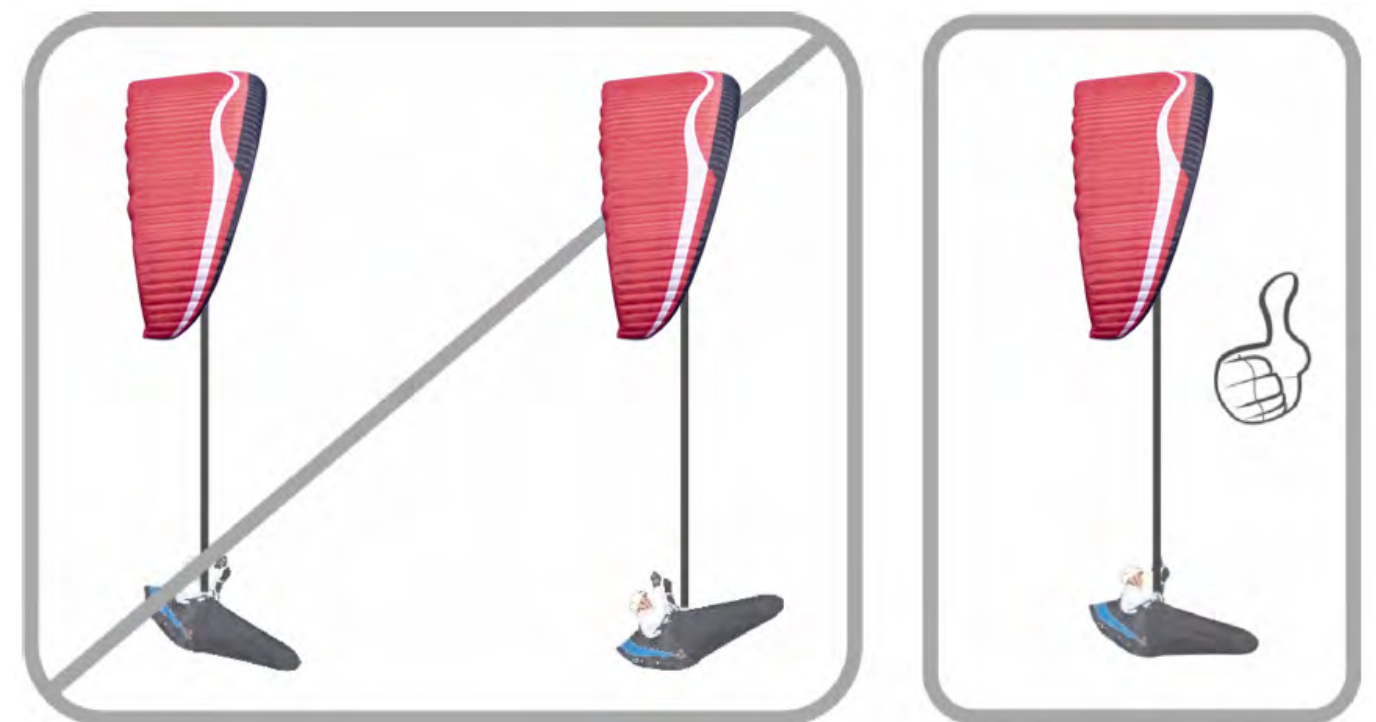
Before the first flight, we suggest the pilot simulate his/her flying position hanging the harness on a harness tester, sitting on CX MAX Harness and trying to find the best position adjustment. This simulation becomes more realistic if the back pocket is filled with objects the pilot would normally carry during flight

The pilot must choose the best body inclination, respecting a central vertical line. We don't advise a steep inclination, so that vision and access to commands are not jeopardized.



Avoid a laying flying position, as this alters the paraglider's commands.

Your command is shortened and More vulnerable to a twist.





THE HARNESS - INFORMATION

Tow release take off

The CX MAX can be used for towed flight. The used equipment must be certified, the team handling the equipment must be licensed and you must have done a workshop learning this take off. Always use the special tow connection. The take off only should be done if the canopy is filled completely and steady above the pilots head.

Tandem flight

The CX MAX was not designed and is not certified for tandem flight. SOL Paragliders doesn't recommend this type of flight

Compatibilidade

As seletes SOL não tem nenhuma restrição para uso com outras marcas de parapente, consulte também o manual do seu parapente.



Observe a incompatibilidade de acessórios isso pode trazer risco ao seu voo.



A instalação de acessórios deve obedecer a utilização do mesmo. (buscar instrução de instalação no manual do acessório utilizado).



Take Off Check List

Before you begin flying with your new SOL Harness, make sure to perform the following inspection in detail:

- All pockets are closed.
- The reserve parachute handle is in the correct position.
- Each hook (chest / leg) is connected and closed.
- The carabiner opening is correct.
- Using the harness CX MAX make sure that all hooks are closed, pay attention to the audible “click”. Also pay attention that no dirt or ice is getting in the mechanism. If necessary lubricate.

EXTREME FLIGHT SITUATIONS

Water landing

Usually safety courses are taught over water, or a poorly calculated landing may force you to land in the water. In this event, you must be careful since the protector at the first moment will act as a floating device, therefore forcing your head into the water and you could be in danger of drowning. The foam, already saturated with water will get heavy and may naturally sink. In case of water landing open as fast as you can the locks and get out off the harness.

After a water landing you must take the protector, seat board, and let them all dry under shade in a breezy area.

STORING YOUR HARNESS

Storage

Avoid storing the harness for a long time in the back of the car or under extreme sun. Heat could jeopardize the materials and/or the proper function. UV radiation destroys the molecular structure of the material. Avoid storing the glider near fire and/or sharp objects. Any contact with acids should be avoided. In case of any doubts ask your distributor.

Back Pack

We recommend that you store your equipment in the back pack. That way it is easy to transport and protect. Your back pack was designed to be useful and comfort. Do it this way:



Step 1: Open your back pack and put your glider in.



Step 2: Your harness put above the glider and close the zipper.



Step 3: Store your helmet and accessories between the glider and the harness or in the upper part of the back pack.



Step 4: Close all parts and pockets of the back pack.

TIPS FOR CARE

- The harness fabric is made mainly out of Nylon, which like any other synthetic material is sensitive to UV light radiation, causing it to decompose and losing its mechanical resistance. For this reason, the unnecessary exposure to sun light, which carries a high UV radiation level in high altitudes must be avoided. It is highly recommended to leave the harness stored away and well protected when it's not being used.
- Avoid handling the harness with friction to the floor, this helps to reduce the wear on the fabric and seams, in addition sharp corners can cut the fabric.
- If you get your equipment wet, try to dry it in the shortest possible time of exposure to the sun. To dry your harness completely, you must remove the column protector, board and side protections if you have one.
- In case of contact with salt water, the harness must be rinsed with fresh water. Salt water can decrease the strength of seams, even if rinsed with fresh water.
- If your parachute gets wet with your harness see how to proceed in your parachute manual.
- Cleaning must be performed only when it is absolutely necessary. We recommend the use of water only with a smooth sponge or cloth. Do not use any chemical product, since it will damage the material permanently.
- It is important you keep pulleys lubricated because in case they do not work may consume the speedy handle or axle, read carefully about the lubricant to avoid spots and fabric consume. Do not apply on the sewing lines.

INSPECTION

The harness must follow the revision schedule:

- The first inspection check is mandatory completing 12 months, 100 flights or 100 hours flights, whichever comes first.
- After the first review, the harness needs to be reviewed every 12 months, 100 flights or 100 flight hours, whichever comes first.
- It may happen that in the review a shorter period for the next review is defined (for example or 6 months, 50 flights or 50 flight hours), whichever comes first.
- Without performing the mandatory inspections, the harness loses its certification and the warranty becomes null and void.
- After any kind of accident or a long period without use: sent the paraglider for inspection to an authorized dealer's workshop or to the manufacturer. It's for your own good.
- Minor repairs (see repairs) you could do by yourself, but all other repairs must only be made by an authorized dealer's workshop or the manufacturer.

REPAIRS

Repairs must only be made by an authorized dealer's workshop or to the manufacturer.

Minor repairs could be handled by yourself, although we recommend that repairs should be performed by the manufacturer or authorized personnel. They have the necessary materials and tools to maintain your harness. Replace materials only with the originals.

If a repair is necessary, only authorized SOL dealers or accredited workshops should be sought. Your SOL dealer will surely help you find one in your region.

When replacing damaged parts, care must be taken so that only original parts or materials from SOL are used. If other parts or materials are used, the approval expires.



WARRANTY

HARNESS WARRANTY - 1 YEAR / 100 HOURS

The SOL Paragliders Harness warranty is limited for 1 (one) year. During this period the warranty is valid for materials and mistakes on manufacturing processes being observed under predefined conditions. This warranty is valid for every SOL harness, AFNOR, CEN DHV, LTF or EN certified, rated for leisure use only.

This does not include professional equipments (school, competitions, aerobatics, etc). This warranty is defined as repair or substitution of the defective equipment parts determined by the producer.

WARRANTY TERMS

1. This warranty is valid for materials and mistakes on manufacturing processes of the harness being observed under predefined conditions;
2. This warranty covers, for a period of 1 (one) year. This warranty is valid for every SOL harness , AFNOR, CEN, DHV, LTF or EN certified, rated for leisure use only. This does not include professional equipments (school, competitions, aerobatics, etc.).

WARRANTY CONDITIONS

1. A form must be completed correctly within 30 days of purchase ([Fill in the Form Here](#));
2. The equipment has to be operated and maintained strictly following the instructions given in the owner's manual. This includes the storage, folding and cleaning of the harness.
3. The maintenance and checking of the harness has to be done only by the manufacturer or an authorized repair shop and a record should also be kept.
4. The harness needs to be revised every 12 months, 100 flights or 100 flight hours, whichever comes first. Without these revisions, harness loses its homologation and this respective warranty;
5. All shipping and handling expenses are paid by the owner.
6. The final decision on exchanging or repairing the respective harness will be decided by SOL Paragliders. The owner need to send to SOL Paragliders:

a) The respective harness to be exchanged or fixed and a copy of all inspections and the flight log.

b) The warranty Form duly completed on the SOL Paragliders website. ([Fill in the Form Here](#));

THIS WARRANTY DOES NOT COVER

1. Alterations of its original fabric, straps and hardware;
2. Damages caused by chemical means, sand, friction, cleaning products or salt water;
3. Any damage caused as a result of errors during operation of the product, incidents or emergency situations;
4. Any damage caused by inadequate operation of the product;
5. Products that may have been subjected of any alteration from the original design and without proper permission from SOL Paragliders;
6. Damages caused by inappropriate transport, storage or settings of the product;
7. Damages caused by the use of not compatible components with the product;
8. Damages caused by the use of inappropriate packaging for the transport;
9. Products without original identification label and serial number;
10. Handling inadequately to the instructions given in the owner's manual.



OPERATION LIMITS

In conformity of LTF standard:

Temperatures between -30 degree till +70 degree of Celsius during the storage shouldn't influence the use and security.

Temperatures between -30 degree till +50 degree of Celsius and a variation of humidity between 25% and 100% during the use shouldn't influence the use and security.

Remember: Your product is a high quality product and was made out of carefully chosen materials. Store your equipment carefully and keep up the maintenance. The operating temperature limit is below -30° C.



ENVIRONMENT AND RECYCLING

Please be aware of our environment: don't toss your garbage into nature, respect the animals. Remember: nature is our gliders engine.

If your harness gets out of use remember it cannot be recycled. Please give it to your dealer or your flying-school, they should know how to handle it.

FINAL WORDS

Safety is the major theme of our sport. In order to fly safely, pilots must train, study, practice and be alert to the dangers around us.

In order to achieve excellent safety levels, we must fly regularly as much as possible, don't go beyond our limitations and avoid exposing ourselves to unnecessary dangers. Learning to fly is a slow process and takes years, so don't pressure yourself. If conditions are not favorable, keep your equipment stored away.

Don't overestimate your skills and be honest with yourself. Every year we see many accidents which in most cases could be prevented with a minor adjustment.

We are a part of the community in which we live: friends, family and even people we don't necessarily know worry about us. Our obligation towards this community is to keep ourselves healthy and that at each landing we will be one landing happier than before. We fly so that we can feel more alive.

We wish you good and safe flights with your new paraglider.

SOL Paragliders Team !!



TECHNICAL DATA

Weight, measure and data

Tamanho	S	M	L	XL	
Largura do assento	30	32	34	36	cm
Comprimento do assento	36	38	40	42	cm
Altura do ponto de conexão	45	45	47	49	cm
Distância do ventral (min - max)	38 - 55	38 - 55	38 - 55	38 - 55	cm
Altura do piloto (min - max)	160 - 175	170 - 185	180 - 195	190 - 200	cm
Compartimento de reserva direito (min - max)	4000 - 9000	4000 - 9000	4000 - 9000	4000 - 9000	cm³
Compartimento de reserva esquerdo (min - max)	2500 - 4500	2500 - 4500	2500 - 4500	2500 - 4500	cm³
Capacidade de lastro superior	10	10	10	10	L
Capacidade de lastro inferior	8	8	8	8	L
Capacidade de bagagem	31	31	31	31	L
Peso da selete	7,5	7,9	8,3	8,7	Kg
Peso máximo do piloto	120	120	120	120	Kg
Espessura do protetor	14	14	14	14	cm
Certificação	LTF / EN	LTF / EN	LTF / EN	LTF / EN	



Weight can vary between 150g depending on the batch of materials and weather conditions.

As cores podem ter uma pequena variação de tonalidade conforme os lotes de materiais.



Reference table: Height X Weight

Kg	45	50	55	60	65	70	75	80	85	90	95	100	105	110	115	Inch
150		S	S	S	S											4'9"
155	S	S	S	S	S	S/M	S/M									5'1"
160	S	S	S	S/M	S/M	S/M	M	M								5'2"
165		S	S/M	S/M	S/M	M	M	M/L	M/L							5'4"
170			S/M	M	M	M	M/L	M/L	L	L						5'6"
175				M	M	M/L	M/L	L	L	L	L/XL					5'7"
180					M/L	M/L	L	L	L	L/XL	XL	XL				5'9"
185						L	L	L	L/XL	L/XL	XL	XL				6'1"
190						L	L	L/XL	L/XL	XL	XL	XL	XL			6'2"
195							L/XL	L/XL	XL	XL	XL	XL	XL	XL		6'4"
200									XL	XL	XL	XL	XL	XL	XL	6'5"
Cm	99	110	121	132	143	154	165	176	187	198	209	220	231	242	253	Lbs



This table is only a reference. Speak with your seller or flight shool to know your exactly harness size.



Parts and materials

Position	Name	SOL Reference
1	FECHO RAPIDO A4928-28/3PC 28MM VERMELHO	1.21048.028.000002
2	ENGATE RAPIDO A4928-28/3PC 28MM VERMELHO	1.21049.028.000002
3	PASSADOR KS 25MM PRATA	1.21017.025.000014
4	FIVELA KS 25MM PRATA	1.21018.025.000014
5	CORDURA LOSANGO RES + HIDRO 4849	2.00466.UNI.000001
6	NEOPRENE 1,5MM PRETO	2.00202.015.000001
7	FITA PES FC 392/ 25 X 0,7MM COR	9.21081.UNI.000002
8	ZIPER INVERTIDO YKK N.5 PRETO	9.22210.005.000001
9	ZIPER SINT PES CONT. ESPIRAL 7MM	9.21151.007.000002
10	CABO ELASTICO 4MM BRANCO	9.22018.004.000003
11	ZIPER SINT PES CONT. ESPIRAL 3MM	9.21151.003.005043
12	FITA PES 12MM VERMELHA	9.21102.012.000002
13	FITA PES 20MM PRETO	9.21102.020.000001
14	TECIDO CORDOBA RIPSTOP RESINAD U	2.00247.UNI.000001
15	CABO ELASTICO 3MM SORTIDO	9.22018.003.999999
16	CORDA NY SEM ALMA 3MM BRANCA 20	9.20005.003.000033
17	PASSADOR A4928-28/3PC 28MM VERM	1.21050.028.000002
18	REGULADOR 20MM PRETO	9.21027.020.000001
19	FIVELA ACO INOX 304 25 X 15 MM U	9.22013.015.000014
20	FIVELA ACO INOX 13X15X2.5 MM UNI	9.21042.UNI.000014
21	ENGATE T 20MM 53,1 X 22,4 MM INO	9.21176.531.000014
22	TECIDO AERADO MESH FREE 100% PES	2.00419.UNI.000001
23	TECIDO AERADO MESH FREE 100% PES	2.00419.UNI.000002
24	FILME POLIESTER MILINEX 0,250MM	9.22048.025.000003



Position	Name	SOL Reference
25	FITA PES 24X1,6MM UNICO PRETO	9.22105.UNI.000001
26	FITA PES 17MM PRETA	9.21102.017.000001
27	REGULADOR TRIMMER ISR 20MM PRAT	1.21010.020.000014
28	REGULADOR TRIMMER ISR 25MM PRAT	1.21010.025.000014





Sol Sports Ind. e Com. Ltda.
Rua Walter Marquardt, 1180 cp 370
89259-565 Jaraguá do Sul, SC BRAZIL
Telefone (+55) 47 3275 7753
E-mail: info@solsports.com.br
www.solparagliders.com.br
facebook: [solparagliders](https://www.facebook.com/solparagliders)
instagram [@solparaglidersofficial](https://www.instagram.com/solparaglidersofficial)